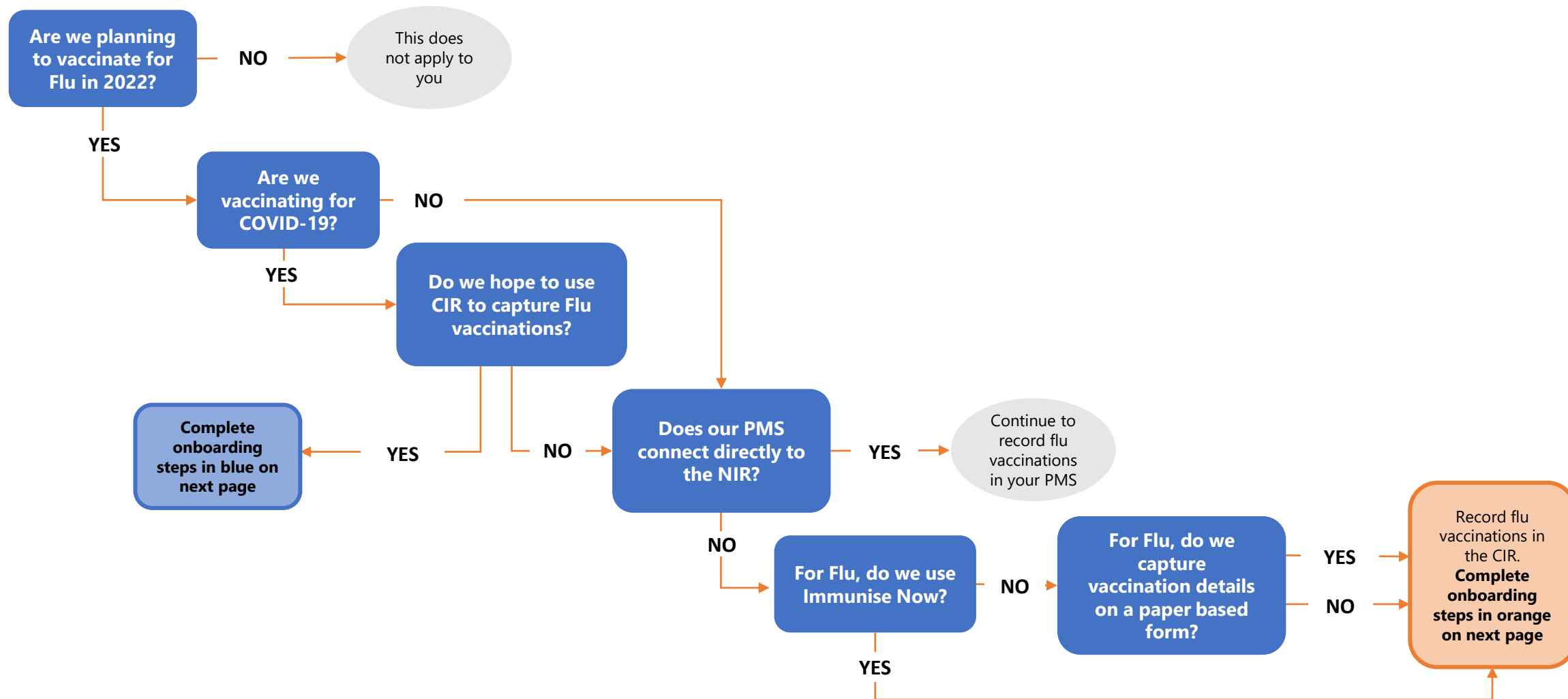
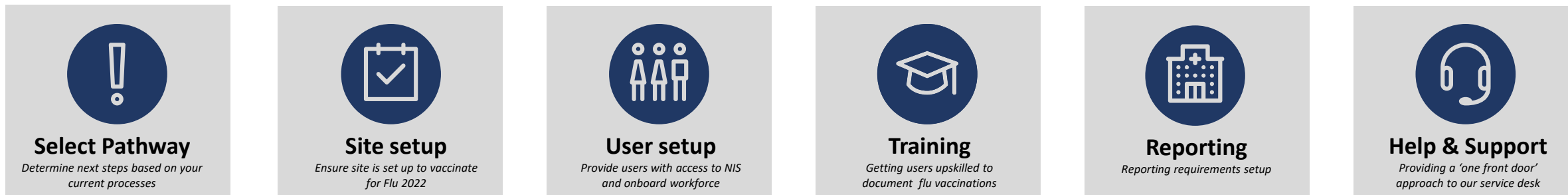


Determining your NIS onboarding needs




Your NIS Onboarding Journey

Select either the blue or orange pathway based on your current processes



EXISTING COVID VACCINATING SITES

Adding Flu capability



No action required

You may be contacted by your DHB lead to confirm your intent to provide flu vaccinations


For existing vaccinators:
No action required

For new vaccinators:
Please contact NIS.engagement@health.govt.nz for a new user setup form. Await confirmation and email regarding training

All existing users will receive an invitation to a flu update webinar.


New users will complete training as noted in orange stream below

Flu and COVID will use the same reporting platform



A reporting workshop will be available to outline the flu specific reporting functionality


If you have any concerns or queries please contact NIS.engagement@health.govt.nz




Optional drop-in sessions for support/ Q&A

NEW TO NATIONAL IMMUNISATION SOLUTION

Planning to deliver Flu vaccinations



Complete **site setup form**



Return completed form to NIS.engagement@health.govt.nz

Await confirmation and user setup request

Receive **user set up form**


Complete with all vaccinator details and return form to NIS.engagement@health.govt.nz

Await confirmation and email regarding training


All new user will receive an email inviting them to:

- Complete initial E-learning module
- Register for a Zoom webinar by providing their email/name
- Access to Classroom for practice

A reporting workshop will be available to onboard new users to enable use of the reporting functionality in NIS



If you have any concerns or queries please contact NIS.engagement@health.govt.nz



Optional drop-in sessions to help get set up

2