



Community Health Council calls for Expressions of Interest

Do you want to make a difference to shaping patient-centred health services?

We are looking for members from the Waitaki, Invercargill, Southland, Clutha District and Queenstown/Lakes regions.

Established in 2017, and meeting monthly, the Community Health Council (CHC) is an advisory consumer council for the Southern Health system (hospital and community health services including GPs), and enables a stronger patient/whānau voice in design and delivery of our health services. Our members are representative from across the district, and a pre-requisite is that members have lived experience of health services, either personally or through support of family or whānau.

If you are passionate about patients, whānau and our communities accessing the best possible equitable care, can consider issues from a 'big picture'

perspective, have an understanding of the health system, and have strong networks and communication skills, we would appreciate hearing from you.

We are calling for expressions of interest for up to three members to reflect the community voice for one or more of the following areas of interest (you may have experience in several areas):

- Pasifika
- Rainbow community
- Youth
- Rural sector

To register expressions of interest please email: chc@southernhb.govt.nz

To find out more, please see the Terms of Reference and other CHC information on www.southernhealth.nz/about-us/about-southern-health/community-health-council

The time commitment for this role is approximately 8-10 hours per month.

Support to get a Covid-19 Vaccine

After a great Super Saturday last weekend, supported by local businesses and personalities across the district, 86.2% of the Southern district population over 12 have received at least one dose, and 68.5% are fully vaccinated.

"We've seen a great response from the public so far but now we are getting to the last push. In order to protect the people and things we love, we need as many people as possible to get vaccinated so if you haven't already had yours, now is the time. If you have, please share your experience and offer support to friends and whānau who may be struggling with the decision," Southern COVID-19 vaccine programme lead Hamish Brown said.

Questions?

If you have any questions or concerns about the vaccine, or have specific questions relating to an existing condition, you can call 0800 28 29 26 free to talk to a clinician. This call can be anonymous and Te reo speakers are also available.

You can find answers to commonly asked questions, such as "does the vaccine affect fertility?", "is it safe if I have a health condition?" and "what are the side effects?", on the Unite Against COVID-19 website: www.covid19.govt.nz/covid-19-vaccines/get-the-facts-about-covid-19-vaccination/covid-19-vaccination-your-questions-answered

Home visits and transport options

If you know someone who has a disability, mental illness or health condition that makes accessing a

COVID-19 vaccine hard, please support them in completing our online webform: www.southernhealth.nz/COVID19/clinics

We will follow up with all individuals to discuss their needs and assist them in accessing a COVID-19 vaccination.

Transport support

A number of free transport solutions are available across the district.

Dunedin:

Orbus buses are free to anyone with proof of a vaccination booking

Queenstown:

Orbus buses are free to anyone with proof of a vaccination booking

Nomads offer a free ride to vaccination with a referral from a disability service provider. Talk to your provider to arrange this.

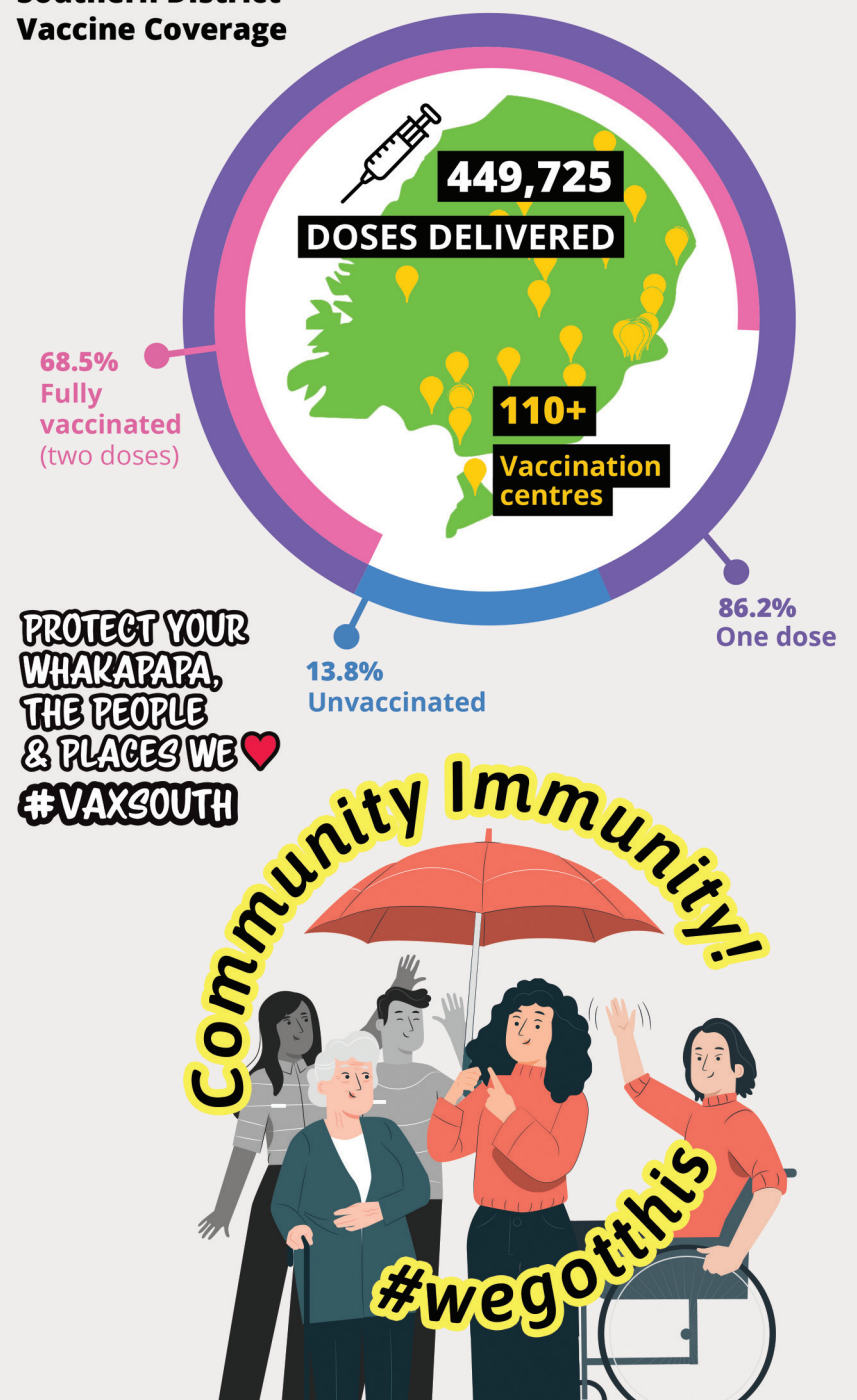
District-wide:

If you live in a rural area and have a disability or health condition, Healthline can assist you with transport. Please call 0800 28 29 26 to arrange a solution.

In the Southern District, we want to vaccinate at least 90% of the population by Christmas and have capacity to meet demand so we strongly encourage anyone who has not yet received theirs yet to get it now so we can all get back to the things we love as soon as possible. No appointments are required at vaccinating pharmacies, mass vaccination centres and some general practices. Or, if you prefer to plan ahead, book now through www.bookmyvaccine.nz or by calling 0800 28 29 26.

17/10/2021

Southern District Vaccine Coverage



New CT scanner boosts radiology capacity at Southern DHB



Diagnostic services at Southern DHB have been enhanced with a new state-of-the-art CT scanner on the Dunedin hospital site.

The new Siemens Somatom X.cite CT scanner is now fully installed in the radiology department, and patient Fay Angus was delighted to be the first patient to be scanned on the new machine in September.

CT scanners are used by the hospital's radiology department to scan for signs of cancer, as well as on other conditions such as blood clots, strokes, tumours,

bone fractures and surgical emergencies. They are also used for interventional procedures including vascular conditions of the chest, abdomen and extremities such as abdominal aortic aneurysms and deep vein thrombosis.

The Siemens scanner was chosen due to its state-of-the-art technology and use of the same operating system as existing CT equipment, eliminating the need for staff retraining. It also has a large 82cm bore and patient observation camera which is designed specifically to improve the patient experience and help them relax.

The additional scanner will allow the radiology department to separate elective procedures (planned procedures) from inpatient and emergency patients. It will also vastly improve scanning capacity. With the new scanner working during business hours with no evening shifts, and the team carrying out three elective examinations an hour, up to 6000 additional elective examinations a year can be performed.

"We're delighted the scanner is fully installed and we're now able to examine more patients," says Acting Southern DHB Executive Director Specialist Services, Megan Boivin.

"We've been working hard to improve access to radiology and reduce the wait list including adding regular evening shifts. The new CT scanner will enable us to put much more capacity into the system, provide swifter care for patients and an enhanced patient experience. We look forward to seeing our CT performance improve in the coming months and the existing wait list recover.

"I'd also like to thank our building and property team, procurement team, and the project team for helping us put this all in place, and our radiology team for their outstanding and ongoing hard work and care."

Board Update



Pete Hodgson, Chair

A Memorable Time to be Alive

Deaths from Covid-19 in New Zealand have been extraordinarily and mercifully low – 28 at the time of writing. But with many millions dying globally this has been a memorable time to be alive, certainly the most unusual in my 71 years on the planet.

There are more twists and turns to come. Some we know about – Delta is heading our way, and it's a lot trickier than last year's variant. Some we don't – will the next variant be nicer or nastier?

The Southern District Health Board is busy. We have quite wonderful clinical and administrative staff working hard and working intelligently. Managers are also right on their game, and we Board members are engaged.

The end result is that we have some of New Zealand's best vaccination rates, we have some really good track and trace capability, we have a primary and community health service that is doing some heavy lifting and which knows more is coming, and we have preparations underway to provide hospital services when that phase of the pandemic hits.

But vaccination rates are not high enough everywhere they need to be. From overseas experience, and now from our own experience in parts of Auckland, we already know that Delta will settle in groups and communities where vaccination rates are lower. From there it will spread to wherever it wishes, whenever it wishes. In our part of the world that means we need to lift vaccination rates among Māori and Pacifica communities, among young people and among quite a few specific rural communities.

If we don't, that is precisely where Delta will make its home.

Most people reading this will have already had their second jab, or will be booked to have it. Bravo. And thank you.

Now start thinking about those around you. Your friends in a poorly vaccinated hamlet somewhere, your whānau or fono or mokopuna, your grandkids, or their friends.

Remember that probably we will all end up getting immunity to Delta, one way or another. Either the vaccine or the disease. Please, please make it the vaccine.

A blank slate for our New Hospital

Demolition work on the former Cadbury Factory is now mostly complete. A total of 98,572 hours were worked onsite in a variety of weather conditions. Eighty per cent (16,117.14 tons) of demolition material was recycled, including concrete, aluminium and stainless steel.

The demolition team worked closely with archaeology and heritage experts, preserving several interesting discoveries including old Hudson & Co. logbooks dating back to 1899, kauri beams, and local bluestone.

A tidying of the site, including some slab

and foundation removal, will take place before the start of enabling works.

The new hospital's inpatient building will be built on the site, and will open in 2028. The outpatient building will be built over the road on the former Wilson's Parking site, and will open in 2025.

The hospital will include 421 beds, 16 theatres (expandable to 21) and 30 ICU or high dependency beds (expandable to 40). There will be approximately 250 car parks, and the DHB is looking for partners regarding the development of an additional parking facility.



Southern Infection, Prevention and Control team celebrated

Southern DHB is celebrating International Infection Prevention (IPC) week this week and the work of our fabulous IPC team.

The team play a crucial role in keeping patients, staff and the community safe and have worked tirelessly over the past year supporting our hospitals and other settings.

Their message this year to everyone is to take some easy steps to protect

yourselves against COVID-19:

- remember to practice good hand hygiene
- wear a mask
- use QR codes wherever you go
- stay home if you're sick and get tested if you have COVID symptoms
- And get a COVID-19 vaccination.



DRIVE SMOKEFREE

— FOR TAMARIKI —

Me auahi kore
tō waka

Supporting families to make their car smokefree.

To limit children's exposure to second-hand smoke, from 28 November 2021 it will be illegal to smoke and vape in a vehicle carrying children (whether the vehicle is moving or stationary).

For more information about the law change, please visit: www.smokefree.org.nz/drivesmokefreefortamariki

Options for support to stop smoking are available via: www.quitstrong.nz