

## SELF DETERMINATION

Each person is in control of their own life



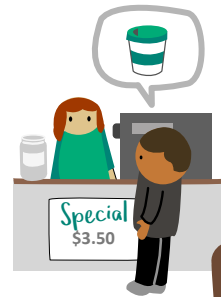
## ORDINARY LIFE OUTCOMES

Each person has aspirations and goals like others at similar stages of life



## RELATIONSHIP BUILDING

Each person and family/whānau is supported to build and strengthen relationships with their natural supports and community



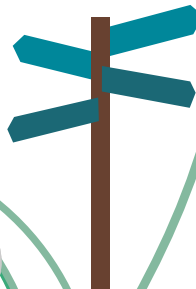
## PERSON CENTRED

Each person has whole of life supports that are personalised (it will be different for every person and every situation)



## MANA ENHANCING

Each person and family/whānau has their abilities and contributions recognised and respected



## EASY TO USE

Each person has supports that are simple to use and flexible

## MAINSTREAM FIRST

Each person has opportunities to do everyday things in everyday places with everyday people at everyday times

## BEGINNING EARLY

Each family/whānau is supported from the beginning to be aspirational for their child

